

West Australian Railscene e-Mag

Issue #207 September 3rd 2012 free electronic railway magazine

West Australian Railscene e-Mag is published weekly by Jim Bisdee on rail happenings on West Australian Railroads

WWW.WESTERNRAILS.COM

follow West Australian Railscene e-Mag on facebook

Copyright Jim Bisdee © 2012



ACN4147 on 8 empty AOKF 2xpack ore cars to Geraldton Port to test car dumper 29/8. Photo Phil Melling

Brookfield Rail commissioned the next section of the new Centralised Traffic Control on Narngulu Mullewa line between Grants [21km] and Eradu [70km] over week of 27th to 31st August. Now three aspect route signalling replaces the existing Train Order System and Self Restoring Points on this section of the line. MidWest Train Control will control this section from the Midland Train Control Centre.

Eight new Fortescue Mining Group SD70ACe locomotives #701 thru #708 were unloaded at Port Hedland Town Jetty over four days August 27th to 30th with MV Transporter sailing that evening. The locomotives were hauled by road on transport floats to FMG Rowley Yard south west of Port Hedland where they were railed then hauled to workshop for commissioning.

Final five new BHPBIO SD70ACe/lc locomotives 4387 thru 4391 were unloaded around 10th and 11th August from heavy lift ship MV Fairload at Port Hedland then hauled to Nelson Point for commissioning.



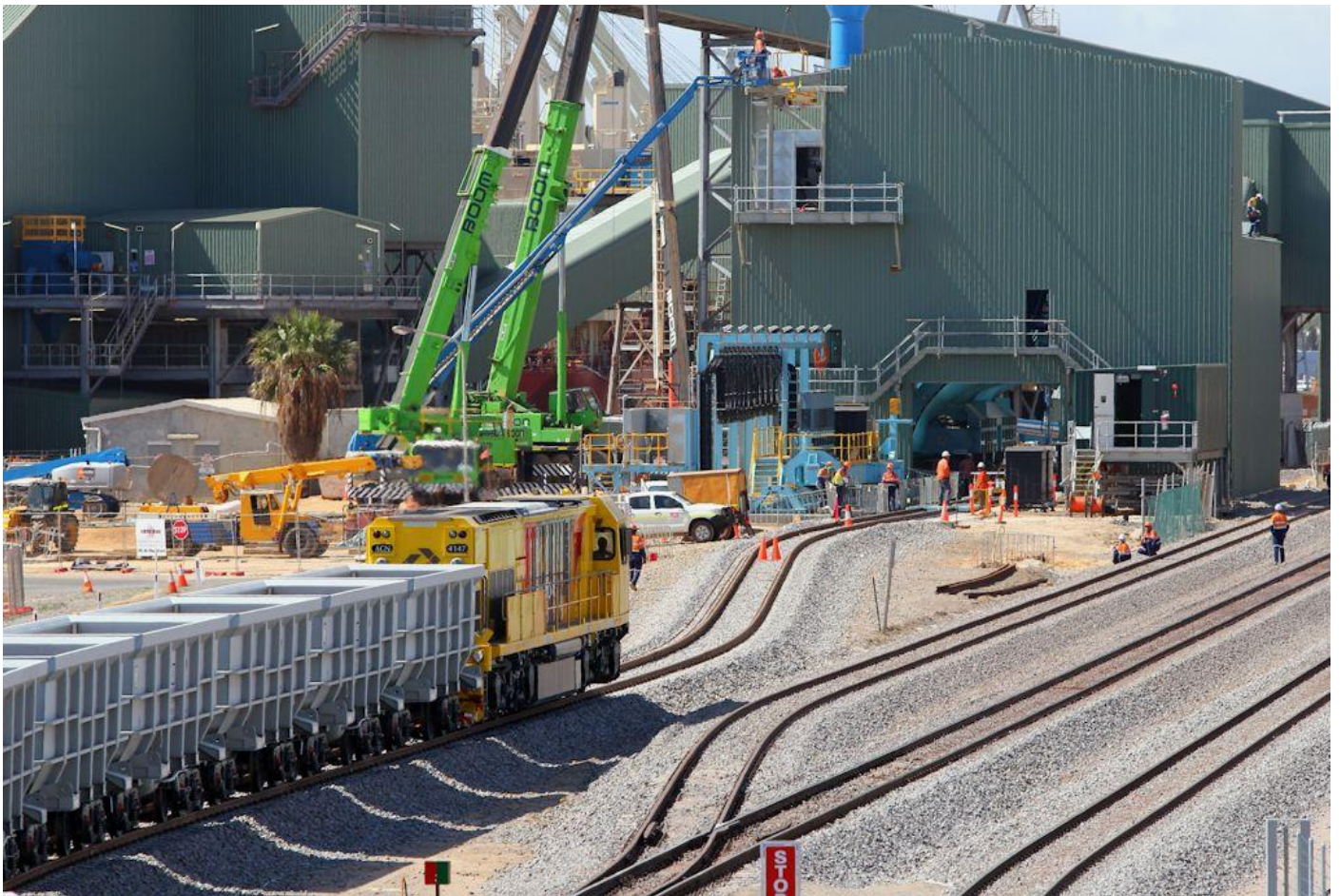
SD70ACe locomotive #701 being hauled out of Port Hedland port area to FMG yard 27/8. Photo Pope Searle



SD70ACe #701 at Port Hedland with T155 symbol on cab side being FMG anticipated tonnages following the expansion of it operations to 155 million tons pa capacity August 27th. Photo Pope Searle



DC2213 & DC2205 on 3141 container train waiting to depart North Quay August 14th. Photo Kieran Wright



ACN4147 on 8 2xPack AOKF ore cars waiting to test two car dumper Geraldton 29/8. Photo Phil Melling



FMG SD70ACe #705 on float being hauled through Wedgefield on August 28th. Photo Mark Bennett



Plasser Australia ballast regulator being hauled through Bindoon August 25th. Photo Matt Hayes



FMG SD70ACe #705 at Great Northern Highway turnoff Wedgefield on August 28th. Photo Mark Bennett



ACA6012 on 7167 empty acid tankers at Welshpool August 18th.

Photo Simon Barber



SCT014 on 7S57 empty grain at Welshpool August 18th.

Photo Simon Barber



Yarrrie ore train passing the tidal flats as it approaches Port Hedland August 24th.

Photo Mark Bennett



6008, LDP002 & CLP10 on 6MP1 QRN intermodal at West Kalgoorlie August 26th. Photo Peter Donaghy



CBH005 & CBH003 on empty Watco grain train at Bootenal August 25th.

Photo Phil Melling



DAZ1903 on 5RT2 empty rail train departing Marchagee August 30th.

Photo Kieran Wright



SCT014 long end leading on 1S56 Watco grain train at Bellevue August 26th.

Photo DeeJay Page



ACN4171 on 5122 light engine trial to Kwinana at Thornlie August 28th.

Photo Jim Bisdee



ZB2120 stabled at CBH Kwinana terminal with rake of CBHN wagons August 25th.

Photo DeeJay Page



LZ3114 & L3118 on 3032 with 5 ore cars to Kwinana to dump at Thornlie August 28th. Photo Jim Bisdee



MMY32 rail grinder stabled at Mundijong siding August 25th.

Photo DeeJay Page



Evaside Road level crossing at Pintharuka with old Perenjori line still in use August 19th. Photo Phil Melling



Williams Road level crossing south of Mullewa showing abandoned old line on right with new heavy duty Perenjori line now in use to the left August 19th. Photo Phil Melling



First dash9 obtained for Robe River after Rio Tinto takeover 9401 at 7 Mile yard 22/8. Photo Garry Lamb



Plasser Australia tamper on road float at Bindoon on August 25th.

Photo Matt Hayes



LQ2121 & LZ3112 on 6035 empty ore run through Cockburn Junction 17/8.

Photo Kieran Wright



P2508, DAZ1906 & P2516 on 7720 empty ore to Perenjori west of Bringo August 25th. Photo Phil Melling



New SD70ACe/lc 4385 & 4311 on loaded ore train entering Nelson Point August 28th. Photo Mark Bennett



DBZ2308, DBZ2303 & DBZ2312 on 3363 empty grain outside Northam August 14th. Photo Matt Hayes

CBH011 the final MP27CN locomotive on order was railed at north Port Fremantle on August 25th then hauled to Gemco Forrestfield for commissioning. CBH012 thru CBH017 heavier MP33CN locomotives have all been completed by MotivePower and are in transit to WA. The five standard gauge MP33C locomotives have been numbered CBH118 thru CBH122 to differentiate and avoid confusion with the narrow gauge units also classed CBH.



NR18 on 1PA8 Indian Pacific passenger train at Bellevue August 18th.

Photo Jim Bisdee

ACN4170 followed by ACN4171 ran light engine trials Forrestfield to Kwinana and return on August 28th.

Overhaul of CFCLA locomotive CM40-8M CD4301 has been completed at United Group Rail Bassendean with it painted in CFCLA livery and now named "The Victory".

Pinjarra Coolup section of South West Main was closed from 0600 on August 27th to 1500 on 29th to allow bridge replacement work at 87.5km be undertaken. The Australind passenger service to Bunbury was cancelled during the period with road coaches operating the service.
