

West Australian Rails

NUMBER 4 A free monthly photo E-mag of railroad happenings in WA during April

Publisher: Jim Bisdee

Email: pm1225@bigpond.com

Copyright Jim Bisdee © 2017



Six car B series EMU set crosses Narrows Bridge at South Perth with old Swan Brewery now an office and apartment complex and Kings Park in the background 19/4. Photo Phil Melling



NR65 on 7PX4 empty steel passing Perth Airport boundary South Guildford April 1st.

Photo Jim Bisdee



CBH017 & CBH002 on 1K05 empty Watco grain April 2nd crossing from down to up main at Midland owing to points issues that caused all down trains to cross over mains then cross back over.

Photo Jim Bisdee



NR16 on 1PA8 Indian Pacific crossing over from down to up main at Midland April 2nd. Photo Jim Bisdee



NR79 & NR34 on 1PS6 intermodal crossing over from down to up main Midland April 2nd. Photo Jim Bisdee



ACN4150 & ACN4142 on 1763 Karara ore to the port unloaders Beachlands April 1st. Photo Phil Melling



CBH006 rare single unit on 5G52 empty Watco grain to Mingenew leaving Narngulu 5/4. Photo Phil Melling



CBH010 & CBH024 on 5K45 empty Watco grain Forrestfield South April 13th.

Photo Simon Barber



CSR001 on 4141 late ILS port shuttle at Welshpool April 12th.

Photo Simon Barber



LZ3107 and LZ3106 stabled at West Kalgoorlie yards April 11th.

Photo Peter Donaghy



Q4016 in new loco trip service bay at West Kalgoorlie on first day of use April 20th. Photo Peter Donaghy



CBH119 & CBH121 on 6S56 Watco grain loading at Kellerberrin April 14th.

Photo Peter Donaghy



Q4011 under new sanding tower at West Kalgoorlie April 25th.

Photo Peter Donaghy



P2502, P2506 & P2509 on 1721 Mt Gibson ore to Geraldton Port at Bringo 9/4. Both photos Phil Melling



CBH009 & CBH006 on 1G50 empty Watco grain leaving Geraldton Port for Mingenew 9/4.



P2503 on 7271 lime to Worsley Alumina passing preserved C1701 at HVR Pinjarra 22/4. Photo Phil Melling



CBH008 & CBH011 on Watco grain being loaded at Mingenew CBH April 23rd.

Photo Phil Melling



S3307 on 5943 empty bauxite to Calcine Pinjarra at Mundijong April 20th.

Photo Jim Bisdee



P2515 & P2503 on 5271 lime at Keysbrook April 20th.

Photo Jim Bisdee



S3310 on 5953 empty bauxite to Calcine at Keysbrook April 20th.

Photo Jim Bisdee



S3302 on 5223 Kwinana to Calcine empty alumina at Keysbrook April 20th.

Photo Jim Bisdee



LZ3114 on 5SG4 fuel tankers from BP terminal Kewdale to Forrestfield April 13th.

Photo Simon Barber



MRL001 & MRL005 on 4033 empty Polaris ore to Mt Walton Welshpool April 12th.

Photo Simon Barber



MRL004 & MRL006 on 1035 empty Polaris ore Kenwick April 9th.

Photo Simon Barber



PA2819 on 1120 light engine Forrestfield to Kwinana at Kenwick April 9th.

Photo Simon Barber



SCT012 being attached to 6PM9 at Bonnie Vale while SCT009 will run 5MP9 to Forrestfield April 22nd.



SCT012, SCT004 failed SCT008 on 6PM9 with SCT009 in loop Bonnie Vale 22/4. Both photos Peter Donaghy



CSR007 stabled in engineers siding Parkeston 23/4 to be attached 1PM9 eastbound. Photo Peter Donaghy



CSR004 & CSR010 on 6MP9 passing CSR007 stabled at Parkeston April 23rd.

Photo Peter Donaghy



P2517, P2508 & P2501 on 3720 empty Mt Gibson ore Moonyoonooka April 25th.

Photo Phil Melling



CBH025 & CBH002 on 1K55 empty Watco grain shunting Mogumber April 23rd.

Photo Phil Melling



MMY032 Aurizon rail grinder arrives at Narngulu yard April 26th.

Photo Phil Melling



MMY029 track recorder hi-rail vehicle heading to Geraldton Port April 6th.

Photo Phil Melling



LZ3112 on 3025 Kwinana to Forrestfield shunter at Kenwick April 18th.

Photo Jim Bisdee



MRL005 & MRL003 on 6030 Polaris ore at Thornlie April 7th.

Photo Jim Bisdee



Q4012 on 1025 Kwinana Forrestfield shunter at Kenwick April 30th.

Photo Jim Bisdee



Q4007 & failed dead attached LZ3111 on 1197 Soundcem shunter Kenwick April 30th.

Photo Jim Bisdee



ACN4151 & ACN4146 on Karara ore at sunrise West End Geraldton on April 29th.

Photo Phil Melling



CBH007, CBH006 & CBH009 on 2G50 empty Watco grain Georgina April 24th.

Photo Phil Melling



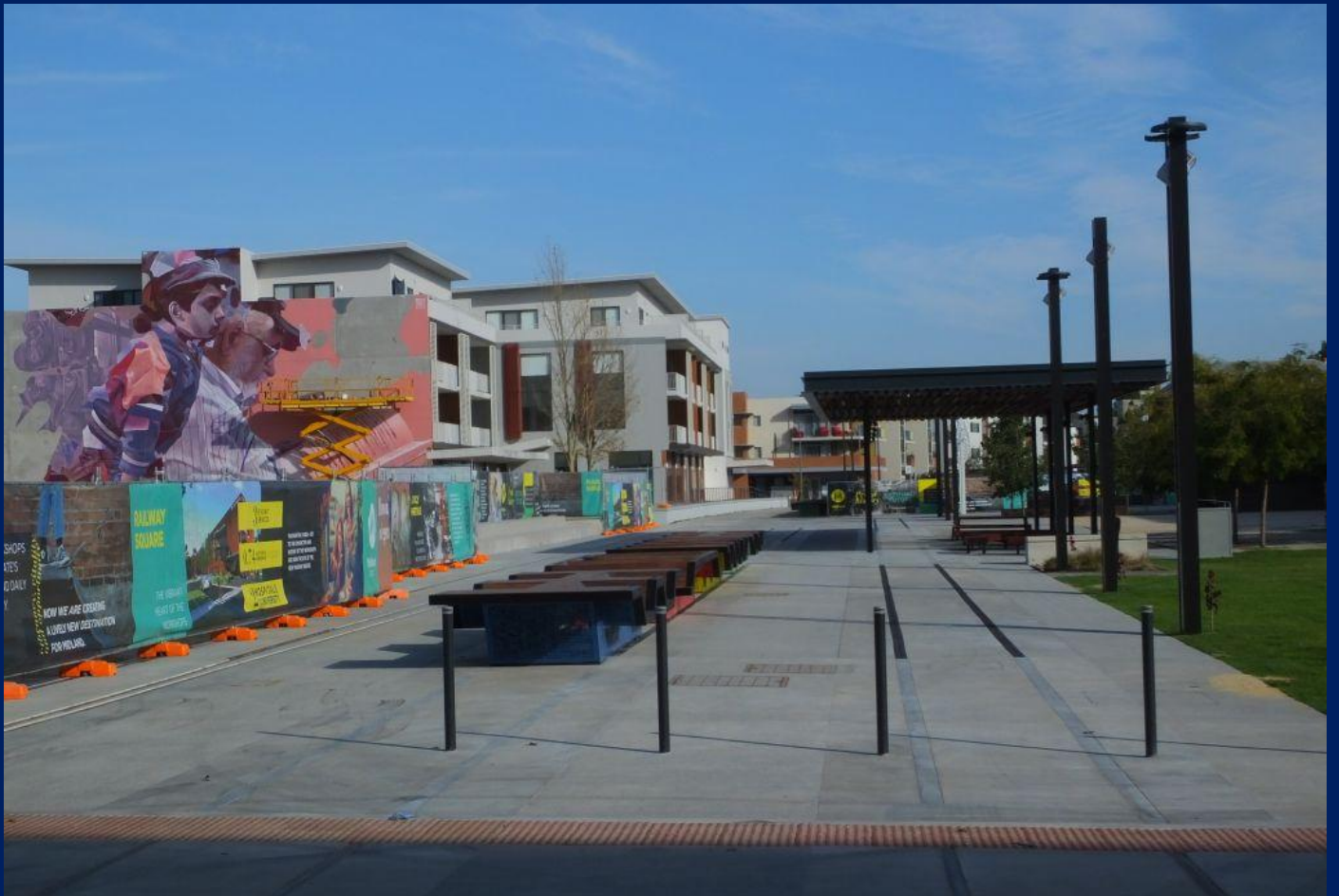
NR101 & NR51 on 5P15 to Jumperkine to recover damaged 4xpack wagon 6/4. Photo Simon Barber



NR51 & NR101 on 5P16 ex Jumperkine at Herne Hill with recovered 4xpack wagon 6/4. Photo Simon Barber



SCT011 & SCT010 on 7GP1 stabled Golden Ridge as is line closure at Kellerberrin 24/4. Photo Peter Donaghy



Redeveloped Midland Square in what was shunting yard at Midland Workshops 30/4. Photo Jim Bisdee



Q4004 & Q4013 on 6025 Kwinana to Forrestfield shunter at Yangebup April 14th.

Photo Rodney Beard